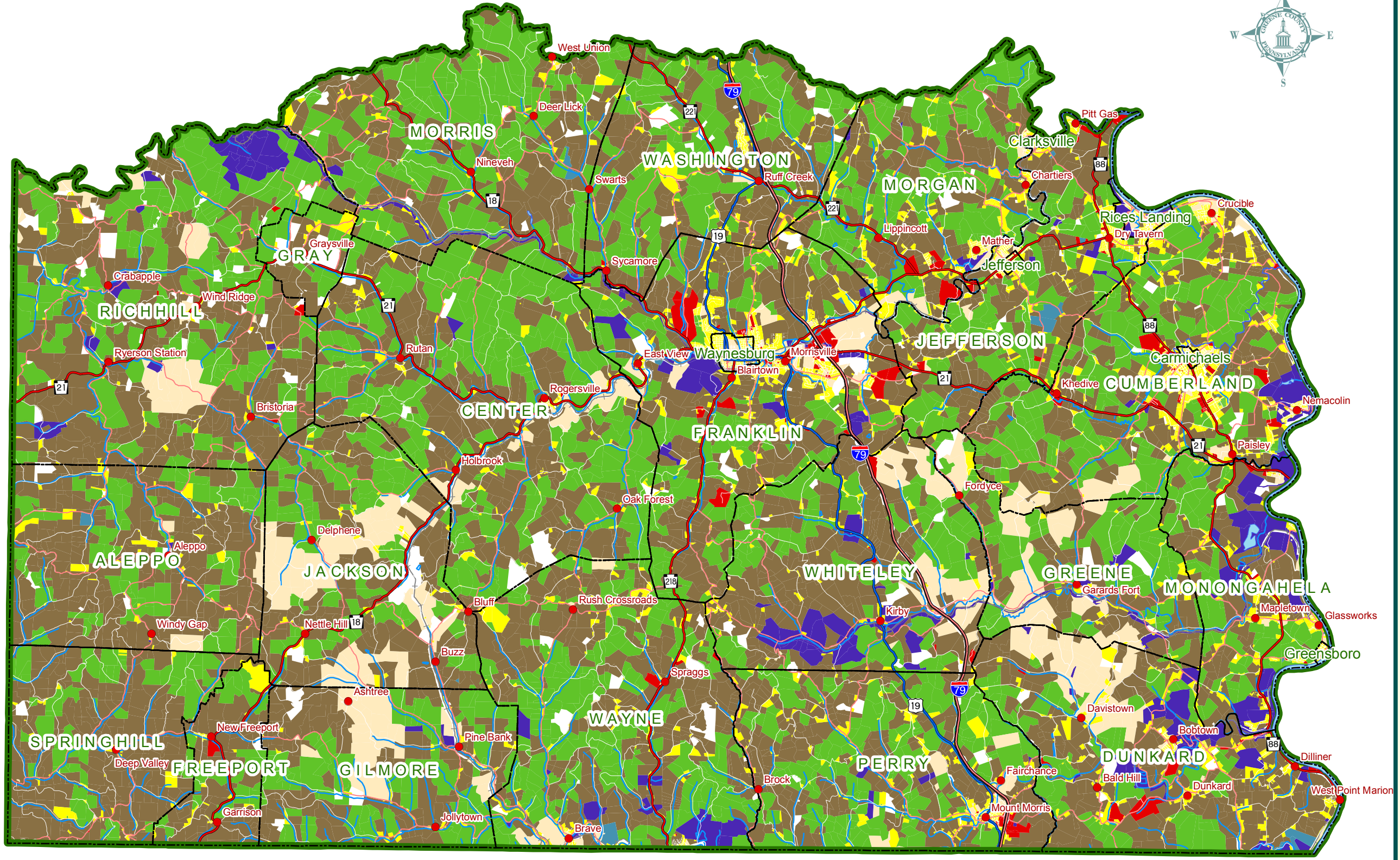


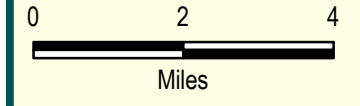
Greene County Commissioners
 Pam Snyder, Chair
 Dave Coder
 Archie Trader



- Legend**
- Municipal Boundary
 - Body of Water
 - Town / Village
 - Interstate
 - US Route
 - Major State Route
 - State Road
 - Local Street
 - Active Rail Line
 - Stream
 - Land Use**
 - Agriculture
 - Commercial
 - Tax Exempt
 - Industrial
 - Residential
 - Clean & Green
 - Utility
 - Unknown



ADOPTED:
 August 14, 2008



Source: Land use data is taken from the tax assessment office, where Clean & Green can be parcels that are agricultural or forest in nature. Tax parcels are current as of 2/21/06.

Figure 10-1 B: Existing Land Use: Tax Assessment