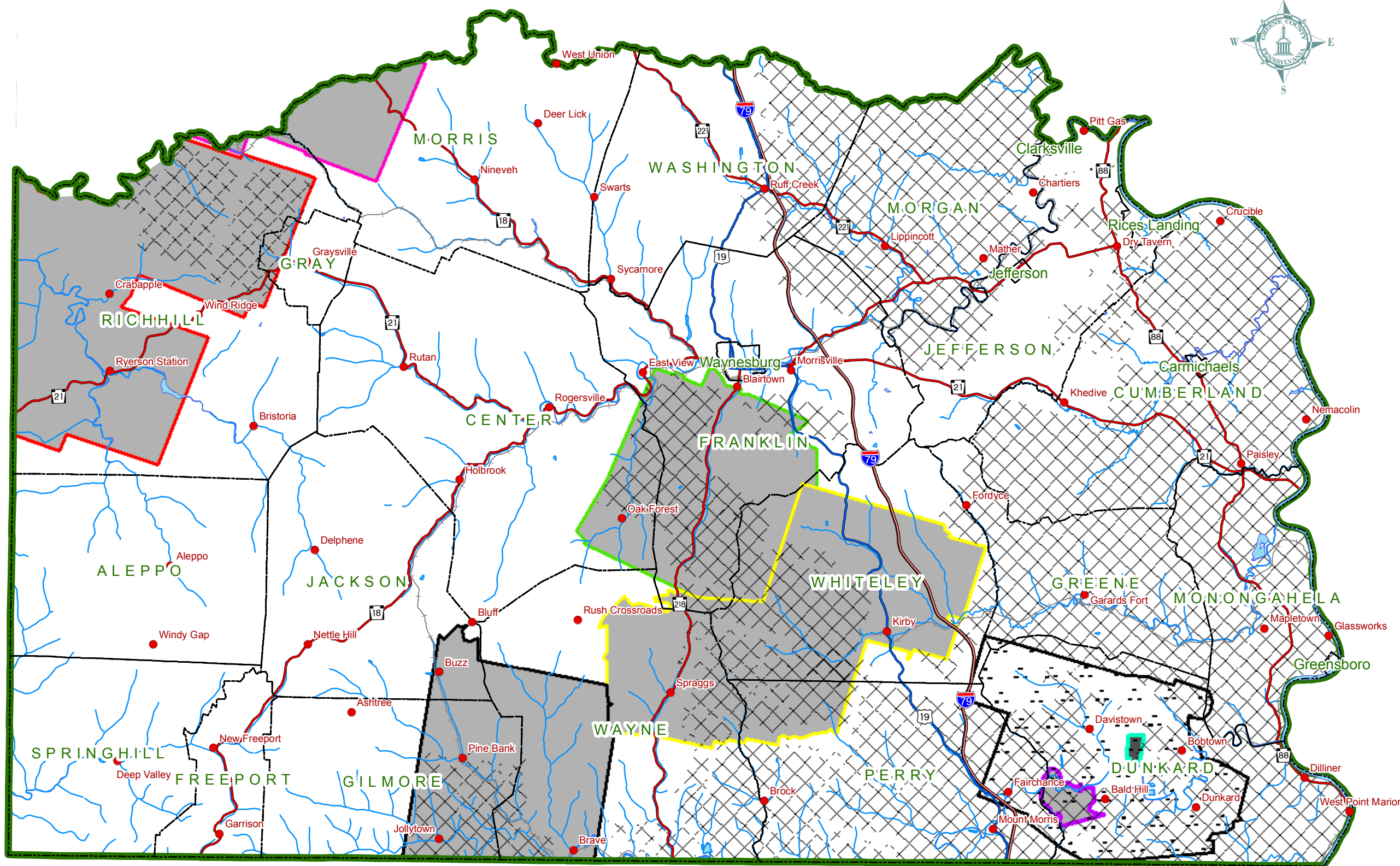
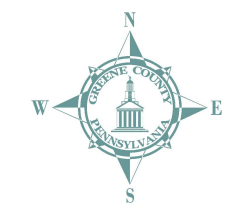
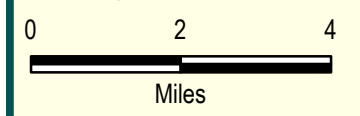


Greene County Commissioners
 Pam Snyder, Chair
 Dave Coder
 Archie Trader



- Legend**
- Municipal Boundary
 - Body of Water
 - Town / Village
 - Interstate
 - US Route
 - Major State Route
 - Active Rail Line
 - Major Stream
 - Previously Mined
 - Shannopin (Inactive) Room & Pillar Mines
 - (Sewickley Coal Seam)**
 - Titus (Active)
 - Dooley Run (Idle)
 - Active Longwall Mines (Pittsburgh Coal Seam)**
 - Bailey
 - Blacksville #2
 - Cumberland
 - Emerald
 - Enlow Fork

ADOPTED:
 August 14, 2008



Source: PA DEP (2007), Southwestern Pennsylvania Commission (SPC) Natural Infrastructure Project (NI) (2005), and Resource Technology Corporation (RTC) (2000).

Figure 12-1: Coal: Deep Mines