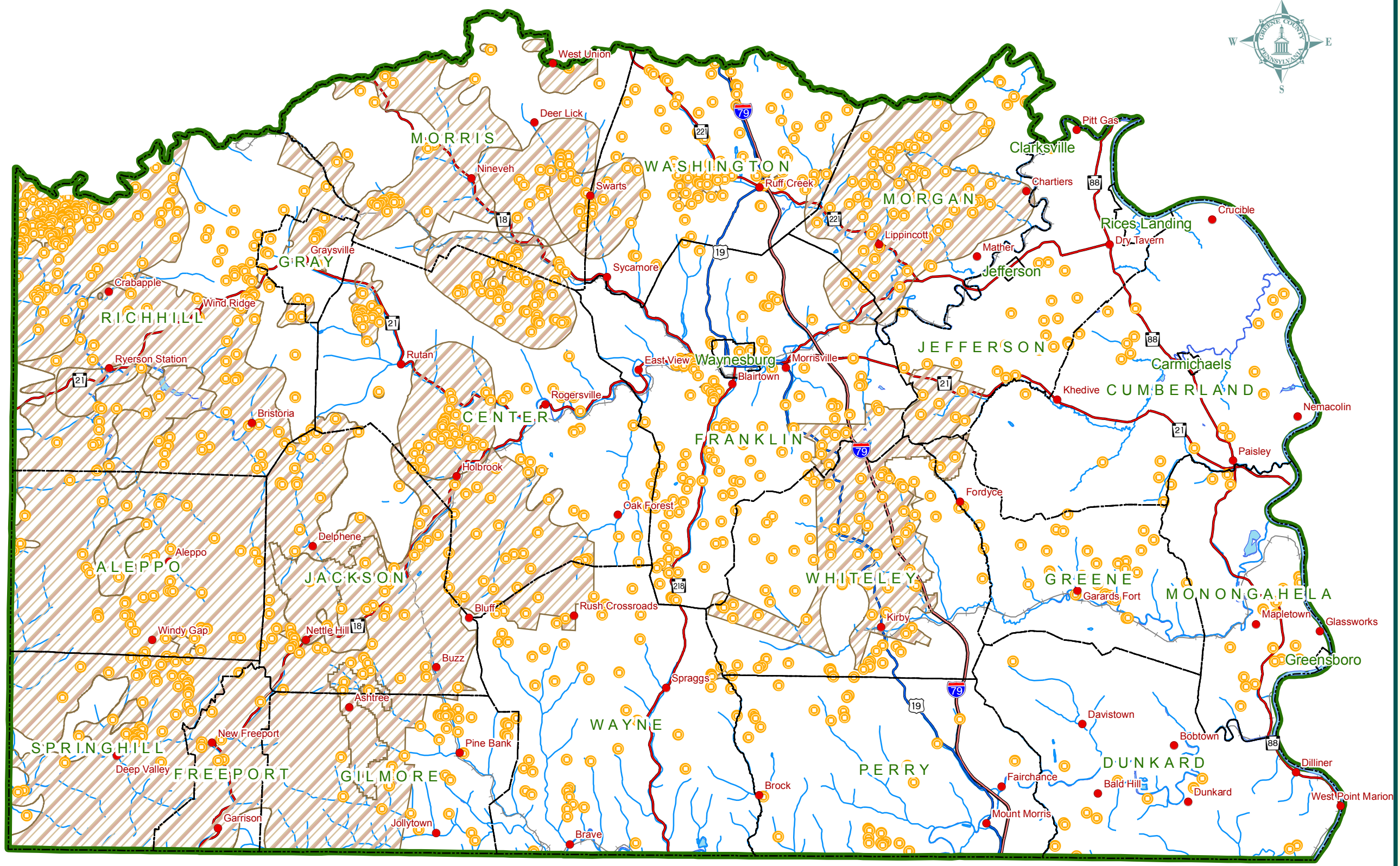


Greene County Commissioners
 Pam Snyder, Chair
 Dave Coder
 Archie Trader



- Legend**
- Municipal Boundary
 - Body of Water
 - Town / Village
 - Interstate
 - US Route
 - Major State Route
 - Active Rail Line
 - Major Stream
 - Oil / Gas Well
 - Oil / Gas Field



ADOPTED:
 August 14, 2008

Miles



Figure 12-2: Oil & Gas Wells / Fields

Source: Greene County Tax Assessment Office and the Southwestern Pennsylvania Commission (SPC) Natural Infrastructure Project (NI).