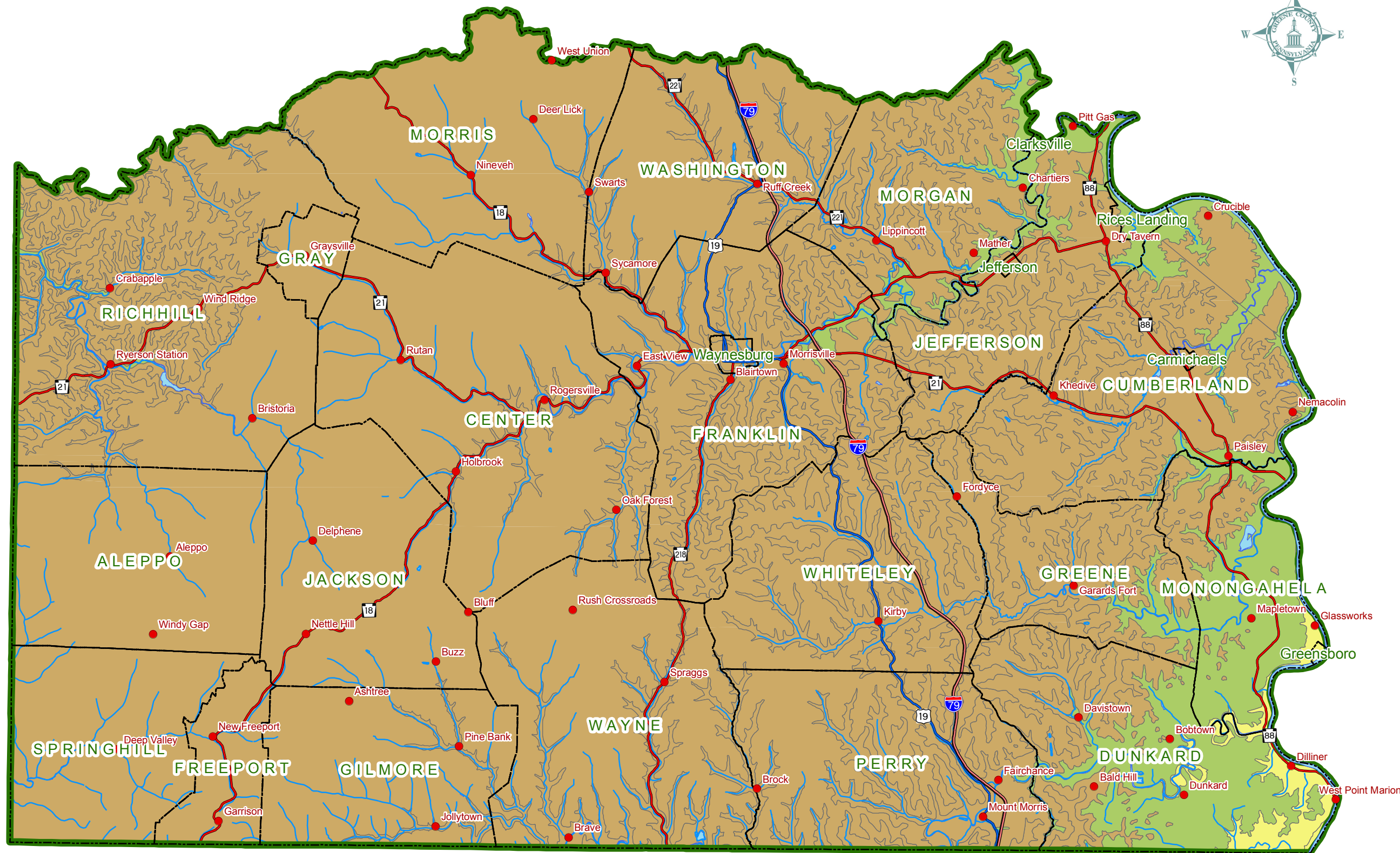


Greene County Commissioners
 Pam Snyder, Chair
 Dave Coder
 Archie Trader



- Legend**
- Municipal Boundary
 - Body of Water
 - Town / Village
 - Interstate
 - US Route
 - Major State Route
 - Major Stream
- Bedrock**
- Sandstone
 - Limestone
 - Shale



ADOPTED:
 August 14, 2008

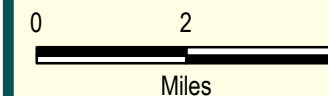


Figure 4-3: Bedrock Lithology

Source: Greene County Tax Assessment Office and from the Southwestern Pennsylvania Commission (SPC).