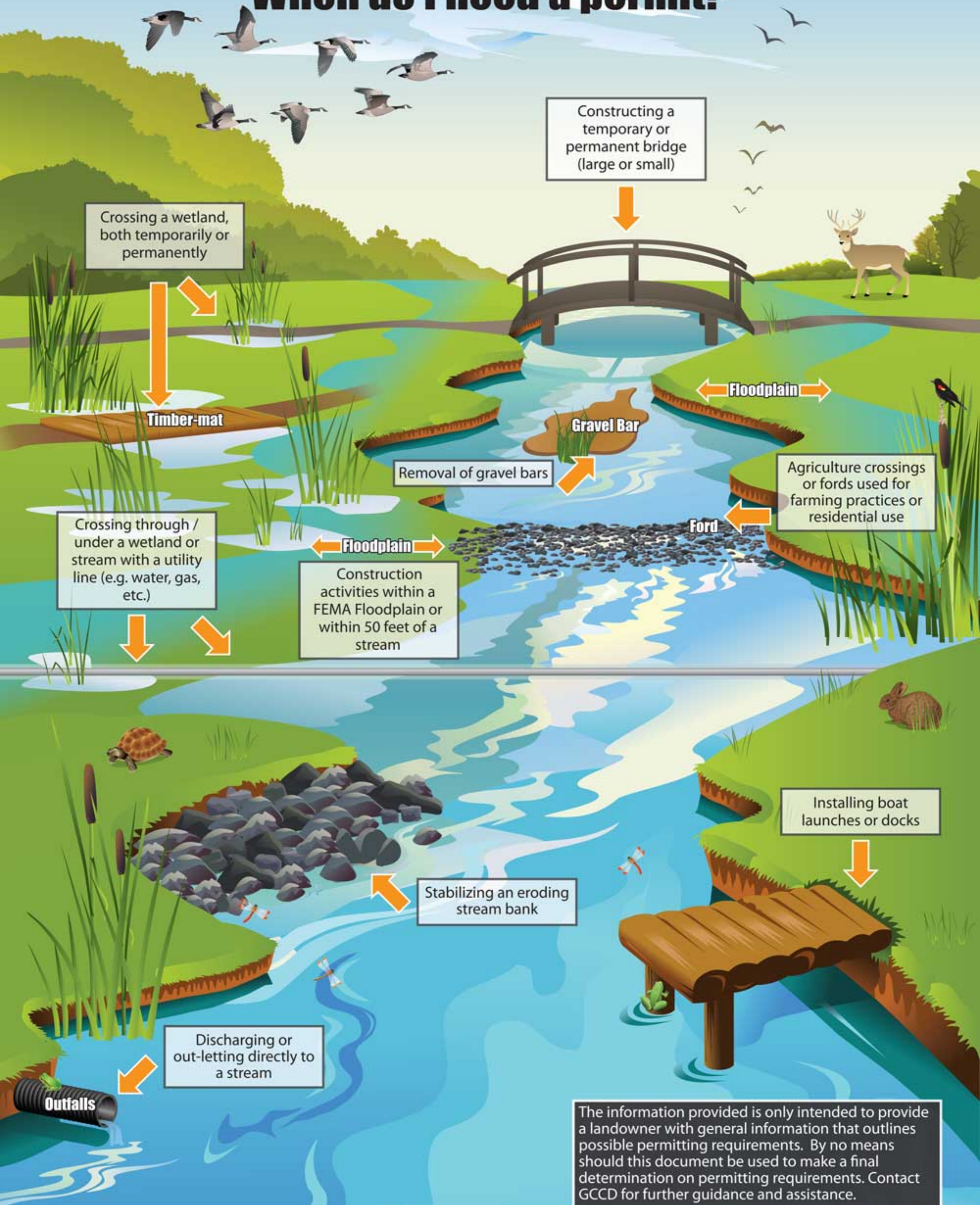


Streams & Wetlands

When do I need a permit?



The information provided is only intended to provide a landowner with general information that outlines possible permitting requirements. By no means should this document be used to make a final determination on permitting requirements. Contact GCCD for further guidance and assistance.



724-852-5278 • www.co.greene.pa.us/gccd • gccd@co.greene.pa.us

Ask your township office for a free brochure, or contact the Greene County Conservation District for more information.